

Transport friendly for every age?

What is friendly?

- ✓ Responsive to diversity
- ✓ Promotes inclusion
- ✓ Supports needs
- ✓ Addresses different abilities
- ✓ Choice and opportunity



Space required to move 60 people

Source: Transportation Gazette



Cars



Rideshare



Autonomous Vehicles



Bus



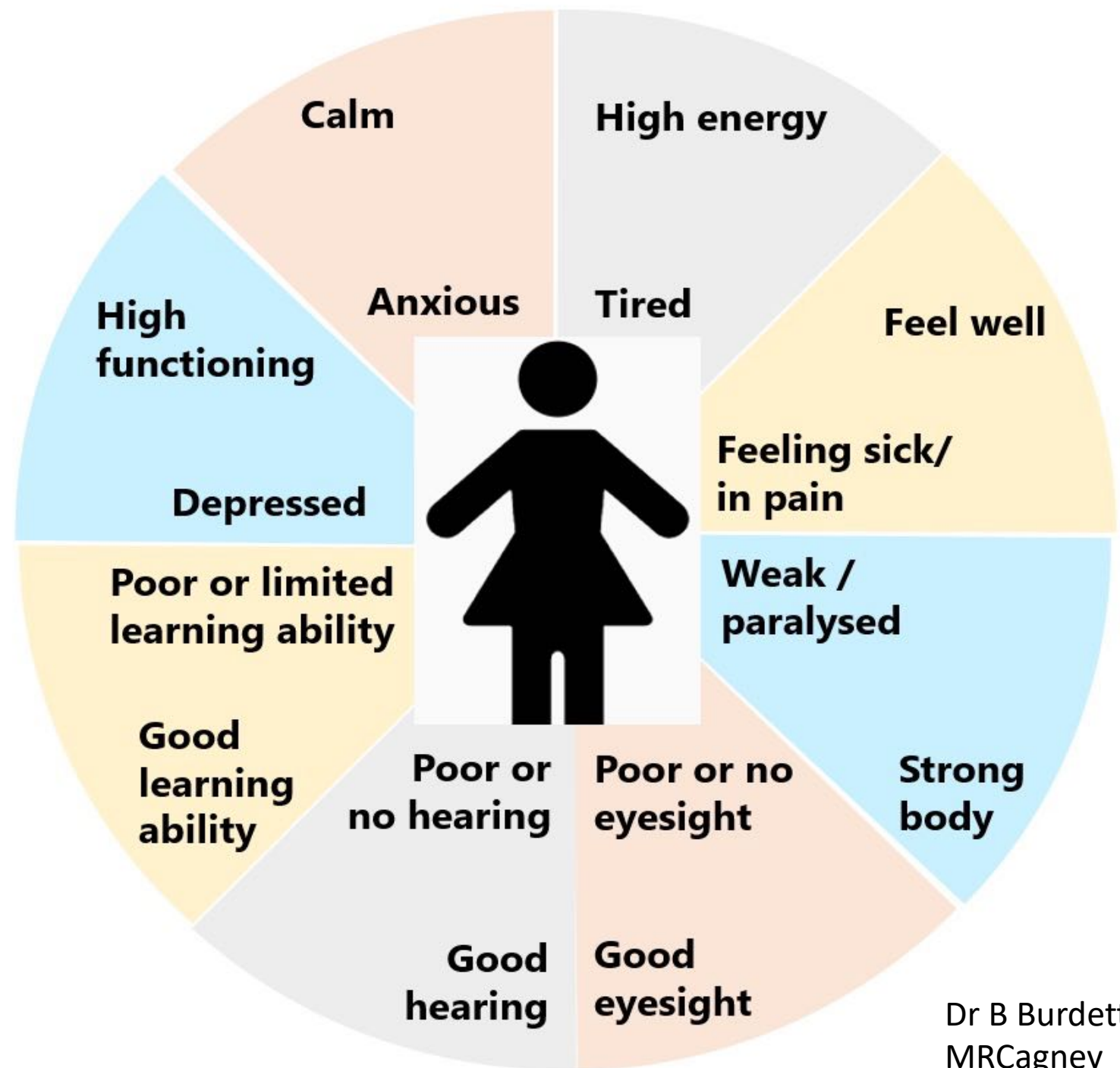
Travel chains



“If a single feature along a travel chain causes difficulties for people, then the whole chain breaks down.”

Lifetime Neighbourhoods, Department for Communities and Local Government, 2011

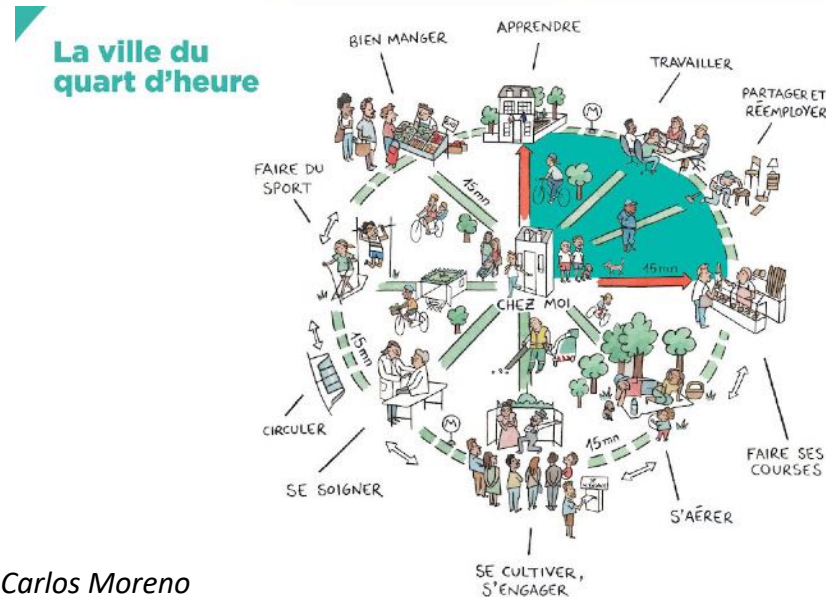
Capability and states



Living local & good universal design

Hīkina te Kohupara – Kia mauri ora ai te iwi

Transport Emissions: Pathways to Net Zero by 2050



Carlos Moreno

Mixed land
zoning

Well designed
street network

Well
located/designed
transport stops

CPTED

Landmarks

Footpaths
(widths &
materials)

Pedestrian
crossings

Kerbs and level
changes

Seating

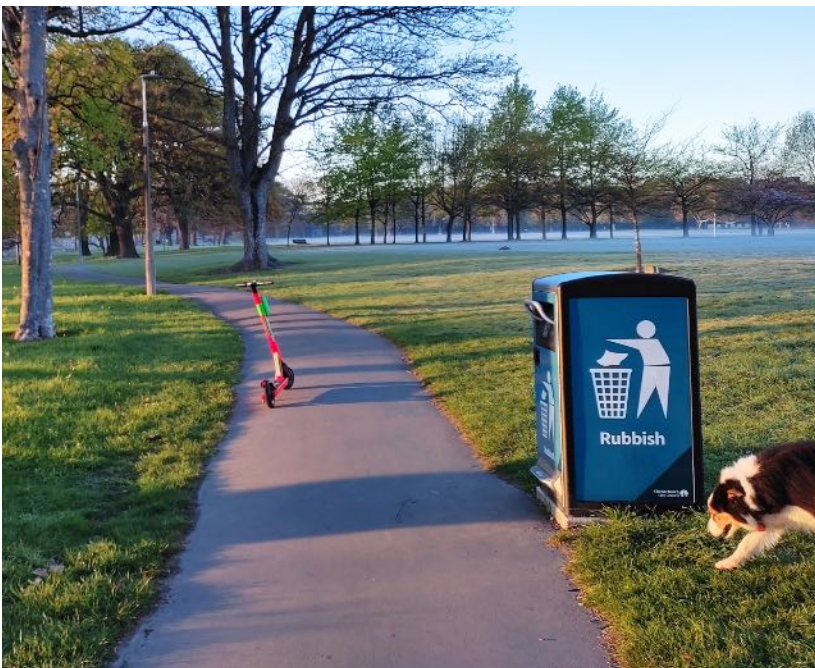
Signage

Street art &
greenery

Toilets



Safe, Obvious & Step free



Minimise hazards

Sharing isn't caring - Spoiler alert **PNG!**

A road or verge is not a footpath

Be the change



Photo credit - Thanks to Liz Allen, Place Creative, Auckland



Photo credit - Thanks to <https://www.timetravelturtle.com/staying-young-in-old-china/>