

HIDDEN HARM: WALKING INJURIES IN AUCKLAND



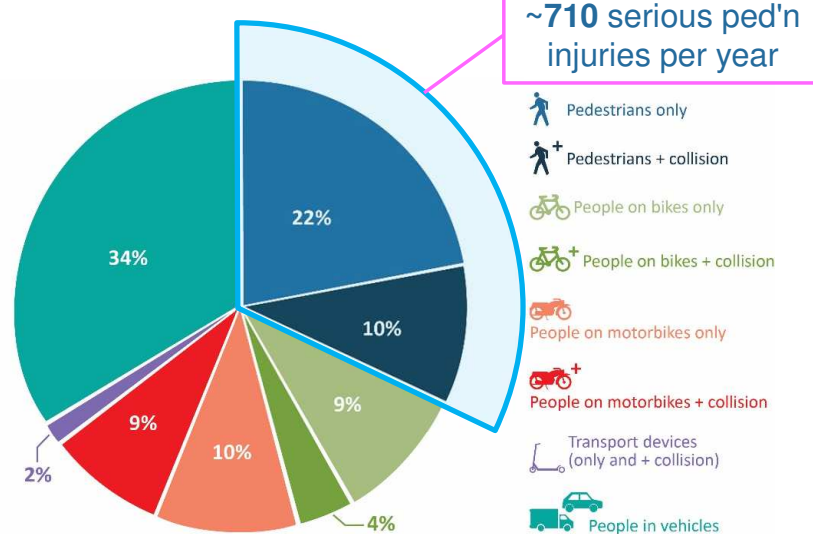
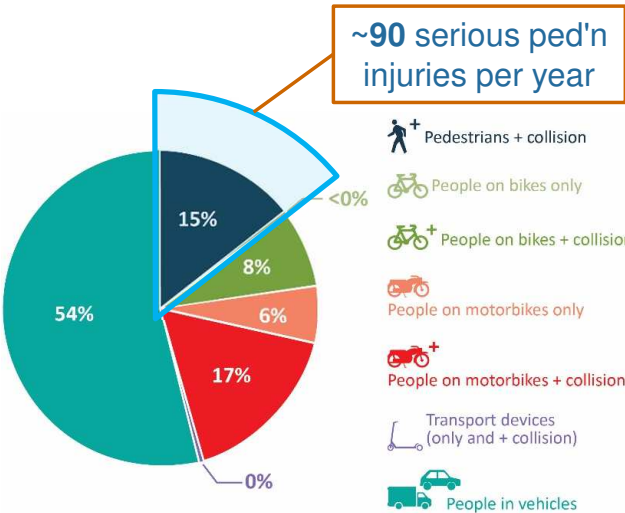
Dr Glen Koorey & Gemma Dioni (ViaStrada Ltd) and Ping Sim (Auckland Transport)

QUESTION: What is the full scale of serious harm from walking in Auckland?

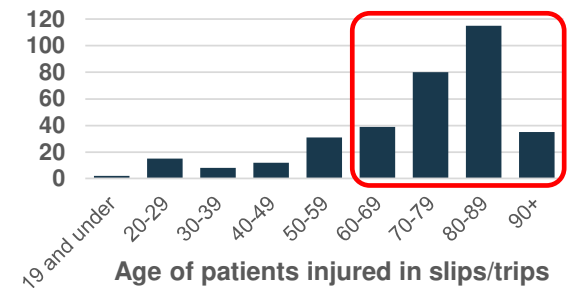
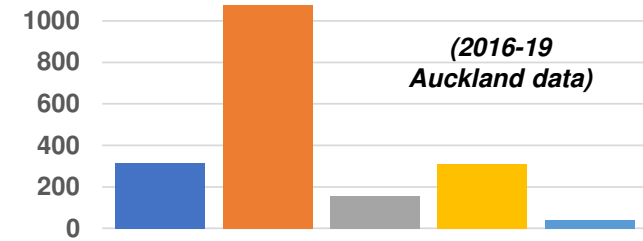
2,457 serious injuries in the Crash Analysis System (CAS)

(2016-19 Auckland data)

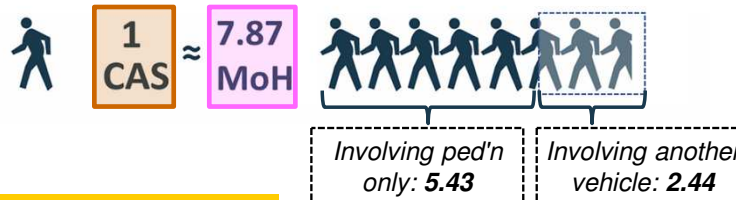
8,647 serious hospital admissions captured by the Ministry of Health (MoH)



Pedestrian-only Injuries – Key Factors



FINDING: Actual walking serious injuries more than SEVEN times greater than reported in CAS



FINDING: Trip hazards harming older walkers