



# ViaStrada Ltd

## Company profile

ViaStrada is a transport planning and design consultancy based in Christchurch.

We provide professional services for national, regional and local authorities as well as for private clients throughout New Zealand and Australia.

ViaStrada Ltd  
Level 1, 284 Kilmore Street  
Christchurch 8011

PO Box 22 458  
Christchurch 8140

[info@viastrada.nz](mailto:info@viastrada.nz)  
[www.viastrada.nz](http://www.viastrada.nz)



TRANSPORT PLANNING AND DESIGN



# Our team



ViaStrada is a team of dedicated transportation planners and engineers, with a wealth of experience and expertise. Whether your project involves solving a local transport engineering problem, or getting help with nationally applicable transport related research, we can help.



**Axel Downard-Wilke** | Director

**Senior Transportation Engineer & Transportation Planner**

Axel specialises in sustainable transport, urban traffic engineering, traffic signals, road safety, intersection modelling and transport planning. He shares his expertise through professional training courses and university lectures and is the instigator of the 'planning and design for cycling' training. Axel's skills have been sought for projects with a national scope and he has presented extensively at conferences and workshops in Australasia.

[axel@viastrada.nz](mailto:axel@viastrada.nz)      027 292 9810



**Glen Koorey** | Director, Senior Transportation Engineer & Transportation Planner

Glen specialises in road safety and sustainable transport, with expertise in walking, cycling, and speed management. He has travelled widely to study overseas practices in street treatments, speed limits, cycling infrastructure. Glen has produced over 150 publications and presentations. Findings from some of his technical and research work have been incorporated into national industry documents.

[glen@viastrada.nz](mailto:glen@viastrada.nz)      027 739 6905



**John Lieswyn** | Director, Senior Transportation Planner

A former US national road cycling champion, John has focused on the planning and design of streets for all transport modes, ages, and abilities since 2005. He worked on major projects in the USA including the US \$100M CV Link pathway. John prepares master plans, business cases, and transportation research and has extensive experience in data collection, demand estimation, and level of traffic stress modelling. Vice chair of the Engineering NZ Transportation Group and a founder of the Travel Demand Management sub-group.

[john@viastrada.nz](mailto:john@viastrada.nz)      021 226 2929



**Warren Lloyd** | Director, Senior Transportation Engineer

Warren's expertise is using form and function to design for all road users, with a focus on pedestrians, cyclists and active transport modes. He uses environmental design to create people-friendly streets. Warren's design experience includes intersections, roundabouts, traffic signals, geometric design and intersection capacity analysis. He specialises in road safety including all stages of auditing, crash analysis, and crash reduction projects. He has worked on rural road design, urban arterial traffic design and local area traffic management.

[warren@viastrada.nz](mailto:warren@viastrada.nz)      027 292 9830







**Jon Ashford** | Associate, Senior Transportation Engineer

Jon has worked on a wide range of design development projects including state highways, arterial routes, town centres and schools and he has concept development and design expertise on cycle facilities. Extensive CAD experience complements his transport engineering design capabilities. Jon has a special interest in road safety and is involved in most road and cycle facility safety audits undertaken by ViaStrada.

[jon@viastrada.nz](mailto:jon@viastrada.nz)      027 591 5291



**Megan Gregory** | Senior Transportation Engineer

Megan has a wealth of experience in traffic engineering and transportation planning. She specialises in road safety and sustainable transport. Her skills include research, data analysis, modelling, technical design, strategy development, and facilitating groups and presentations. Her technical design skills include intersections and corridors for all transport modes. Megan's work has contributed to the development of industry technical guidance and training material and she has won notable awards at industry conferences.

[megan@viastrada.nz](mailto:megan@viastrada.nz)      027 907 3431



**David McCormick** | Transportation Engineer

David has a passion for road safety and sustainable transport, with a particular focus on vulnerable users. David most recently worked for Invercargill City Council where his responsibilities included general road safety, speed management, asset management, and the LED street lighting upgrade. He has also been involved in traffic management, road maintenance, and the Invercargill speed limit review by-law.

[david@viastrada.nz](mailto:david@viastrada.nz)      021 400 232



**Nick Reid** | Graduate Transportation Engineer

Nick has completed a Civil and Natural Resources Engineering degree at Canterbury University. He is interested in the link between inequality and access to transport. Nick's honours thesis was about 10 Minute Cities- where all the places a person needs to go to are within 10 minutes of walking/wheeling. Progress towards the 10-minute goal was measured for most urban areas in Aotearoa.

[nick@viastrada.nz](mailto:nick@viastrada.nz)      021 052 7488



**Luca Ware** | Graduate Transportation Planner

Luca recently attained a triple major in geography, environmental science, and psychology. Luca's interest in environmental psychology and human factors within the built environment are an asset to many research, travel demand management, and planning projects. She has studied active transport perceptions and motivations for mode choice.

[luca@viastrada.nz](mailto:luca@viastrada.nz)      021 227 4338



**Debbie Roxby** | Marketing Manager

Debbie is our marketing manager, information designer and administrator. She has held a wide variety of roles during her career, gaining an extensive range of skills and experience. With a strong interest in design, Debbie assists in producing engaging documents and vibrant graphics which present technical information in a way which is easy for a variety of audiences to understand.

[debbie@viastrada.nz](mailto:debbie@viastrada.nz)      021 0259 3977



# Our services

## Transportation engineering

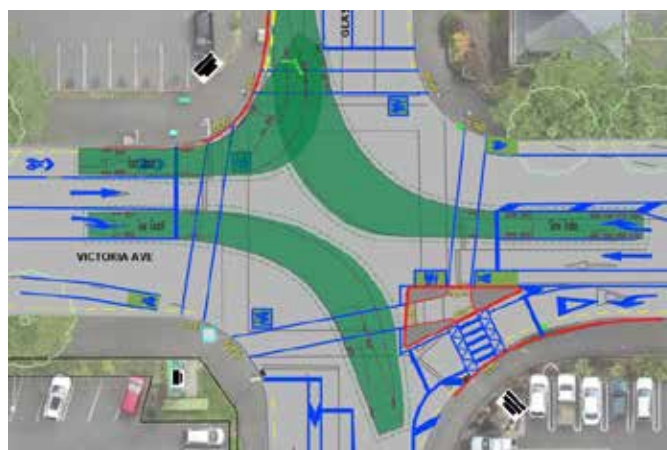
We provide design solutions for urban and rural contexts.

### Design and review

- Scheme investigation and concept design
- Geometric design based on complete streets and place-making principles
- Intersection design, especially roundabouts and traffic signals
- Pedestrian and cycle facility design
- Car parking and access design

### Studies and safety audits

- Level crossing safety impact assessments
- Crash reduction studies
- Existing infrastructure audits
- Road safety audits from concept through to post construction
- Peer reviews
- Formal trials of new traffic control devices



## Research and publications

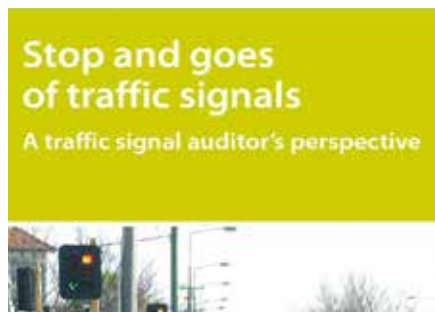
We carry out transport research and policy guidance

- Research and analysis
- Literature reviews
- Traffic generation and parking studies
- Transportation field surveys
- Publications and industry presentations

## Industry guidelines and training

We use international best-practice to provide leading guidance for the industry.

- Infrastructure planning and design guides for walking, cycling and public transport
- Construction standard specifications
- Workshops and webinars covering planning and design for cycling and walking

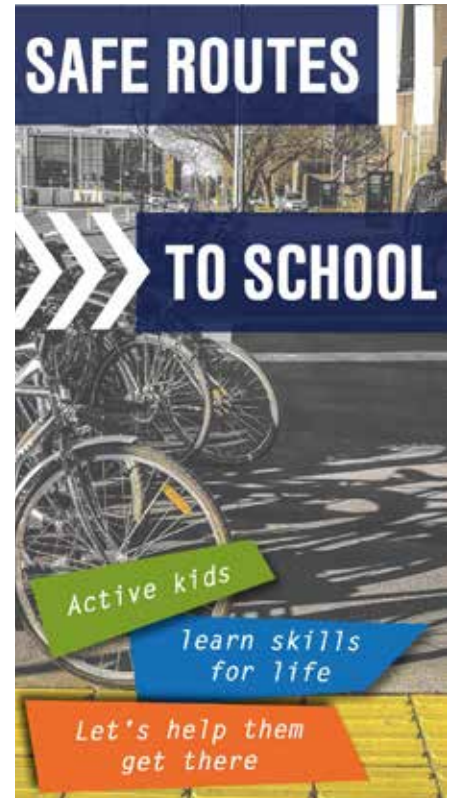




## Transportation planning and policy

We plan for walking, cycling, public transport, freight, and private vehicles. Our aim is to help people move using different modes of transport.

- Network and area-wide transport plans
- Corridor planning for transport and land use
- Walking and cycling strategies
- Business case development
- Master Plan development
- Community and stakeholder engagement
- School and workplace travel plans
- Advice on legislation and regulations
- Speed management reviews and strategies
- Transport and parking reviews for new developments



VIASTRADA