



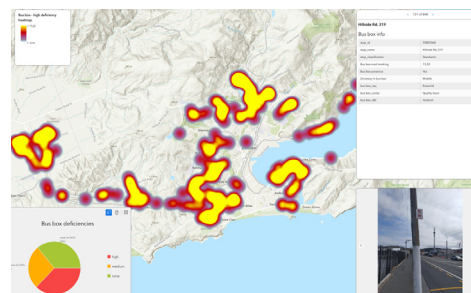
PUBLIC TRANSPORTATION

Public transport services play a vital role in creating a sustainable, socially inclusive transport system. Our team specialises in improving bus networks through comprehensive reviews and strategic planning. We assess infrastructure and networks, conduct RAMM evaluations, and review stop locations to ensure optimal accessibility and efficiency.

With extensive experience in bus priority measures, such as in-lane stops, bus lanes, and signal priority, we help enhance travel times and reliability. Our expertise includes bus route planning supported by GIS analysis and economic assessments. By leveraging data sources like customer feedback, Bee Card boarding data and operator databases, we provide evidence-based recommendations for meaningful improvements.

WHAT WE DO


- **Design, review or safety audit** public transport infrastructure
- **Bus route planning** and **economic assessment**
- **RAMM assessments**
- Advice for **evidence-based improvements**
- **Customer feedback** and **usage analysis**
- **Level Crossing Safety Impact Assessments (LCSIA)**s
- **ArcGIS data visualisation** and **mobile GIS tools**




WHO WE ARE

ViaStrada is a transport planning and design consultancy based in Ōtautahi Christchurch, New Zealand. We provide professional services for national, regional and local authorities as well as for private clients throughout New Zealand and Australia.

Key personnel

 **John Lieswyn** is a principal transportation planner and ViaStrada company director with 20 years in transport planning, specialising in public transport. He managed Palmerston North City Council's bus interchanges and 500 stops, authored and updated Bus Stop Guidelines, and contributed to NZTA's national standards. His work spans policy, asset management and corridor analysis, supported by advanced PT planning qualifications.

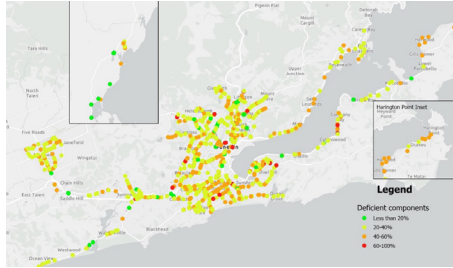
 **Tanja Simon** is a transportation planner specialising in public transport planning, GIS analysis, and passenger surveys. She has delivered projects improving bus networks and customer experience in Germany and New Zealand, leveraging strong data and geospatial expertise.



Project examples

Public transport for Christchurch rebuild | Christchurch City Council | 2011

Post earthquakes, ViaStrada assisted with analysis and planning for future rapid public transport corridors to improve access and support sustainable urban growth. Our work explored options such as bus priority measures, busways, and light or heavy rail, including advice on routes, station locations, and central city modes.



Customer meta-analysis | Environment Canterbury

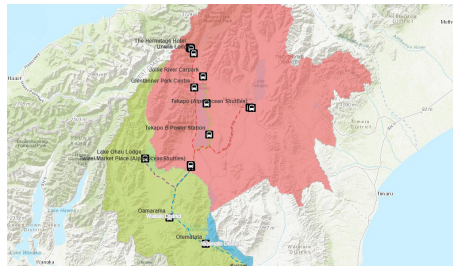
2025 | Analysed Metro Christchurch customer feedback to identify network improvement priorities. Developed a robust data framework and ArcGIS visualizations to inform evidence-based decisions for a more connected, customer-focused public transport system.

Bus stop audits | Otago Regional Council

2024 | Completed safety, accessibility, and condition audits for 800+ bus stops using mobile GIS tools. Delivered NZTA-aligned data to guide real-time signage and future investment, showcasing nationwide capability and effective remote team management.

Lincoln Road bus priority | Christchurch City Council

2017–20 | Delivered bus priority project, balancing complex objectives through data-driven design and public engagement. Evidence-based plans were implemented to improve travel reliability, safety, and transport outcomes for all road users.



Public Transport Design Guidance (PTDG) peer review | NZTA

2019–20 | Reviewed PTDG for bus stops, leveraging extensive experience in Christchurch and Palmerston North delivering informed, practical recommendations to ensure national consistency and best practice in bus stop design.

Makenzie District Visitor Transport Mapping | Dept. of Conservation

2019–20 | DOC partnered with ViaStrada to develop a web map summarizing population, environment, tourism, transport, and road safety data. The project also explored park & ride options for Aoraki Mount Cook, assessing locations, shuttle needs, and operating models.

Bus stop guidelines | Palmerston North City

2017–19 | Updated bus stop design and location guidelines to reflect best practice, ensuring safe, consistent, and user-friendly infrastructure. Supported PNCC's commitment to convenient, reliable, and appealing public transport through strategic, evidence-based planning.



For more information contact John
John Lieswyn | Director & Principal Transport Planner
MET, PTP, FCHIT
john@viastrada.nz | 021 226 2929

VIASTRADA
TRANSPORT PLANNING AND DESIGN